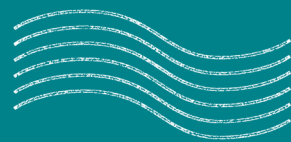


# Incoming Exchange



Factsheet  
2024 – 2025



# University of Hull

## Contact Information

### Address

University of Hull, Cottingham Road, Hull  
HU6 7RX United Kingdom

### Telephone Number

- +44 (0)1482 46 5900

### Website

- [www.hull.ac.uk](http://www.hull.ac.uk)

### Erasmus Code

- UKHULL01

## Global Experience

### Team

#### Website

- [www.hull.ac.uk/choose-hull/study-at-hull/international/global-opportunities](http://www.hull.ac.uk/choose-hull/study-at-hull/international/global-opportunities)

#### Email

- [incoming-mobility@hull.ac.uk](mailto:incoming-mobility@hull.ac.uk)

## Visa & Immigration

### Team

#### Email

- [iect@hull.ac.uk](mailto:iect@hull.ac.uk) (International Engagement and Compliance)

#### Website

- [www.hull.ac.uk/choose-hull/study-at-hull/international/visas-and-immigration](http://www.hull.ac.uk/choose-hull/study-at-hull/international/visas-and-immigration)

## Programmes & Courses

You can study at Hull for either one trimester or a full academic year (two trimesters) on one of the following programmes:

- **Exchange**

For all students studying at a university that has an exchange agreement with us.

- **Study Abroad (fee-paying short term programmes)**

For students at a university which does not have an exchange agreement with the University of Hull.

Module information for the 2024/25 academic year, including titles and assessment criteria, will be provided in due course. We offer modules in four Faculties:

- Faculty of Arts, Cultures and Education
- Faculty of Business, Law and Politics
- Faculty of Science and Engineering
- Faculty of Health Sciences (Psychology and Sports Science modules only)

Please note modules are subject to change and constraints (timetabling, not running, prerequisites and capacity). Module information on offer for your application will be available at application stage.

You are likely to study 3 modules per trimester, but we ask you to choose more in case some choices are not available.

**Psychology and Law** modules are only available where a direct agreement exists between your department at your university and the University of Hull.

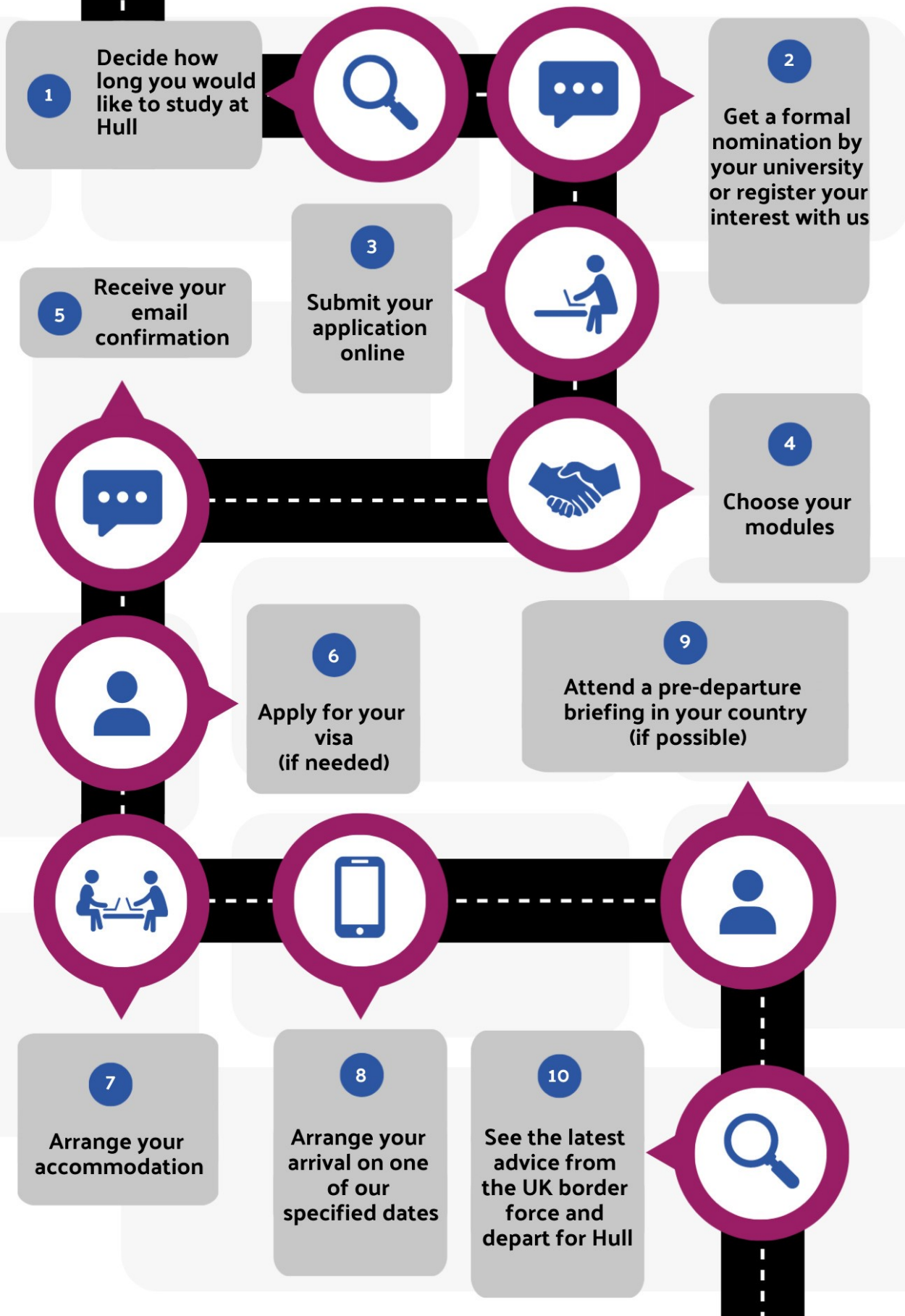
**Social Work and Youth and Community Development** modules are unavailable due to restrictions in being able to work with vulnerable people in the UK.

Regrettably we do not offer exchange opportunities on our **Medicine** programmes.

Note it may not always be possible to approve your module learning agreements in advance. If you need comparable modules you **MUST** ensure that you note this with your application, as this may not be possible given the constraints for module choices.

# 10

## Steps of an exchange in Hull



You can study at Hull for one trimester or two trimesters only. Check with your home university about how long you can study with us.

**If your University has an agreement with the University of Hull**, ask your University to contact us at [incoming-mobility@hull.ac.uk](mailto:incoming-mobility@hull.ac.uk) to inform us that you are interested in coming to Hull to study for one or two trimesters.

**If your home University does not have a formal agreement with the University of Hull**, email your expression of interest to come and study at Hull as a fee paying student to [incoming-mobility@hull.ac.uk](mailto:incoming-mobility@hull.ac.uk). Please give details of your home university, subjects studied, level of study and how long you would like to spend at the University of Hull.

On the day that nominations open, The Global Experience Team will email a nomination form link to partners with instructions on how to nominate students to The University of Hull.

You will need the following documents for your online application, which you will need to download:

- The formal nomination from your home University (if applicable)
- A photocopy of your passport
- A transcript of your results from your studies at your home university that have been achieved so far. A transcript is an official list of all of the courses you have taken to date, indicating the grades you have achieved.
- A letter of recommendation from an academic member of staff at your home university. The letter should describe how the member of staff knows you, why you are suitable for the course and confirm you are in good academic standing.
- Evidence you meet the English language requirements. Click [here](#) for acceptable proof.

Once your nomination or expression of interest has been received, we will email you a link to an online application form when the application opens and provide you with further information about studying at the University of Hull.

Trimester One and Full Year applications will be open between 1 April and 15 June 2024. The application will be closed on 15 June 2024 to further applications.

Trimester Two (only) applications will be open from 1 August 2024. Further information will follow nearer to this date.

We are sorry but **we are not able to accept late applications**. The online application process will not be re-opened.

You are likely to study three modules per trimester, but we ask you to choose more modules in case some of your choices are not available. Most modules are worth 20 credits, and you may take up to 60 credits per trimester.

**The total number of credits you should take are:**

One trimester: 60 credits (equivalent to 30 ECTS credits) Full year: 120 credits (equivalent to 60 ECTS credits)

We will e-mail you to confirm your place at the University of Hull and with details of what to do next.

All international students may require a visa to study in the UK. We will e-mail you with information about visa applications and UK entry documents. The information you receive will depend on the length of your study and modules you have chosen.

Students are provided with accommodation application details together with the study application form. We will email you details about how to apply in your course confirmation. If demand exceeds supply, we will direct you to alternative accommodation in the private sector. If you have any questions about accommodation, please e-mail [rooms@hull.ac.uk](mailto:rooms@hull.ac.uk).

There are no additional tuition fees for exchange students. If your tuition fees are not covered by your home institution, you will need to pay them yourself, with the University offering different methods.

All fees are payable in GBP sterling.

We ask that all student who are studying with us confirm their arrival dates to us. We will e-mail you with details of our preferred arrival period with your acceptance letters.



# Important Dates

## Trimester 1

Preferred arrival dates: Between 13 and 20 September 2024

Inductions & Registrations: week commencing 23 September 2024

Teaching Period: 30 September - 13 December 2024

Winter Exams: 6 - 26 January 2025

## Trimester 2

Preferred Arrival Dates: Between 18 and 25 January 2025

Teaching Period: 27 January - 30 May 2025

Easter Vacation: Between 14 and 28 April 2025

Summer Exams: Between May and June 2025

We will email you with a link to our E-Induction, which includes information to help you prepare for your arrival at the University.

## Pre-Registration

You will be contacted by email with instructions on what you must do before you can register with the University. You will be asked to pre-register, which enables us to collect key information from you and allows you to upload a photo for your student card.

You will need to bring some identification and a copy of the registration email with you to complete the registration in person at the time and location specified. Exact dates and locations for registration events will be confirmed by your department.

## Timetables

As exchange students you will not be able to view timetables until they open, which is usually September and January annually. Once your timetable is available you will be able to download it on the iHull app or view it online.

## Welcome Week (Compulsory)

The University hosts a series of welcome and induction programmes throughout Welcome Week. You will be provided with details when you arrive.

The schedule will include activities such as **compulsory induction and registration**, plus information about the many social activities you can take part in.

## Teaching Begins 26th September

This is the day that your course officially begins. You'll probably find that your lectures won't fully start until the next week, but your department will have useful activities throughout the week to help you settle in.

# Entry Requirements

You will need to be a current student in good academic standing at your university, and have completed at least one year of your course. We assess each application individually.

All classes are taught in English, therefore students are expected to be proficient in the English language to be capable of understanding, writing reports, making presentations and completing exams

## English Language Requirements

If you are a student who will study the with us for **one trimester**, you will need to provide a letter from your study abroad / exchange coordinator, or an academic member of staff from your home University, stating that your level of English is a minimum of B2, along with any other certification you have. On entry you will currently be required to hold a Standard Visitor Visa.

If you are a student who is studying for a **full academic year** you will need to provide evidence of your English proficiency (ELP). This must be one of these accepted tests. You are required to apply for a student visa before entry to the UK and will be allocated a Certificate of Status only after you have provide sufficient proof of ELP, along with an up to-date passport and reference.

## Credit Conversions

\*Credit transfers differ between universities and countries.

ECTS Grade	Hull Degree Class	Hull Mark	Definition
A	1st (First)	70–100	<b>Excellent:</b> Outstanding performance with only minor errors
B	2:1 (Two One)	60–69	<b>Very Good:</b> Above the average standard but with some errors
C	2:2 (Two Two)	50–59	<b>Good:</b> Generally sound work with a number of notable errors
D	3rd (Third)	40–49	<b>Satisfactory:</b> Fair but with significant shortcomings
E	Compensable	35–39	<b>Sufficient:</b> Performance meets with minimum criteria
FX	Fail	<b>Fail:</b> Some more work required before the credit can be awarded	
F	Fail	<b>Fail:</b> Considerable further work is required	

# About the University

## Twitter

- @UniOfHull

## Facebook

- /universityofhull

## Instagram

- @universityofhull

## Facilities

- Cafes, bars and shops
- Library. Our Brynmor Jones Library is one of the finest of its kind in the country, following a £28million refurbishment
- Free high-speed Wi-Fi
- More than 1,100 open-access computers and 1,600 study spaces around the University
- Culture on campus. Enjoy our exciting programme of live music, plays, screenings, exhibitions and performances each week
- Societies, sports teams and volunteering opportunities
- Sports and Fitness Centre
- Faith and spirituality. Benefit from a variety of religious student societies and places to practice your faith on campus and in Hull
- On-campus chapel, which is used by chaplains for services and groups. We also have a Muslim prayer room
- Childcare Centre

## Information Offered by MyJourney

The University of Hull offers an online service known as 'MyJourney'. On the site there is a library of information in how to settle into life at the University of Hull and into Hull itself. From the cost of living to instructions on opening a bank account, registering with a UK Doctor (GP) to tips and tricks on how to traverse the city, the region, and the country.

## Links

- [Further Information about Accommodation](#)
- [Information about Fees and Finance](#)
- [International Arrival Arrangements](#)
- [Pre-Departure Briefing for UK-bound Students](#)
- [Border Guidance for International Students](#)
- [Academic Key Dates](#)
- [University of Hull Welcome Fest](#)
- [Campus Information Map](#)
- [Societies, Activities and Events](#)
- [Student Support](#)

The University of Hull has a dedicated Student Support team, where students can get help and advice in any of the following areas; health and wellbeing, disability, learning support, money, faith and religion.

- [Doctor \(GP\) Locator](#)
- [Visas & Immigration](#)
- [Hull University Union](#)
- [Visit Hull and East Yorkshire](#)
- [Humberside Airport](#)
- [East Midlands Airport](#)
- [Manchester Airport](#)
- [Leeds Bradford Airport](#)
- [Trainline](#)
- [EYMS Buses](#)
- [Stagecoach](#)

